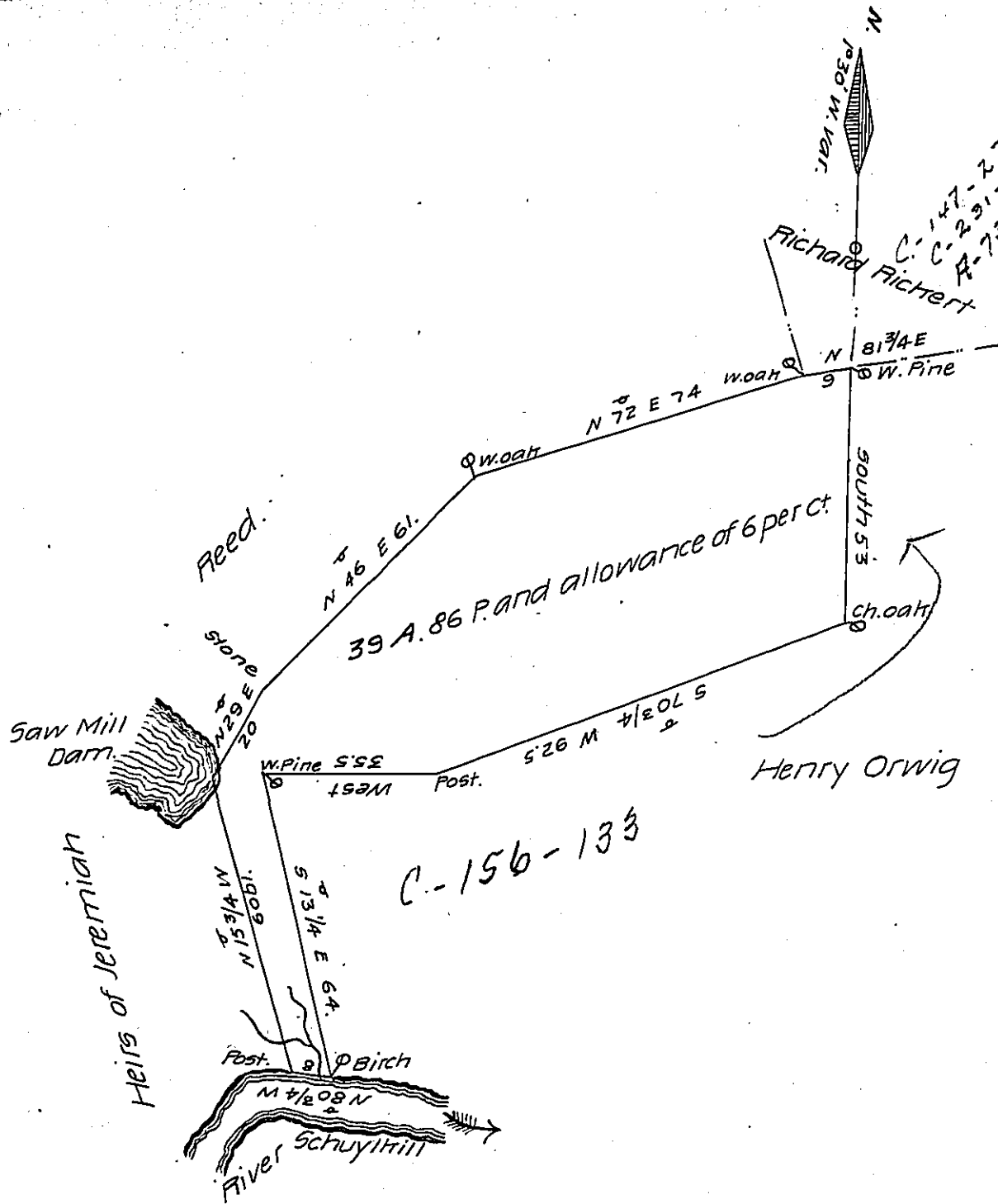


Scale 40 perches to an inch



Situate in Manheim township, Schuylkill county surveyed unto Thomas Reed on the 19th day of November 1819 in pursuance of a warrant granted him dated the 21st day of June 1819 directed to J. W. Roseberry Esq. late Dep. Sur.

F. Lauderbrun Dep. Sur.

Jacob Spangler Esq.

Sur. Genl.

The above described tract of land is situate abt. 2 miles from Orwigsburg, chiefly on Scollop hill, at present of not much value, incapable of cultivation except after the Chinese method of spirally ascending.

IN TESTIMONY that the above is a copy of the original remaining on file in the Department of Internal Affairs of Pennsylvania, made conformably to an Act of Assembly approved the 16th day of February, 1833, I have hereunto set my Hand and caused the Seal of said Department to be affixed at Harrisburg, this thirteenth day of September 1906

*Lauchlin Curran*  
Secretary of Internal Affairs.